

Clarkson University Commencement Potsdam, NY

Saturday

Dress # 1 — *Always bring your rain cape!*

Leave Brockville: 11:45 pm

Tune-up: 1:00 pm

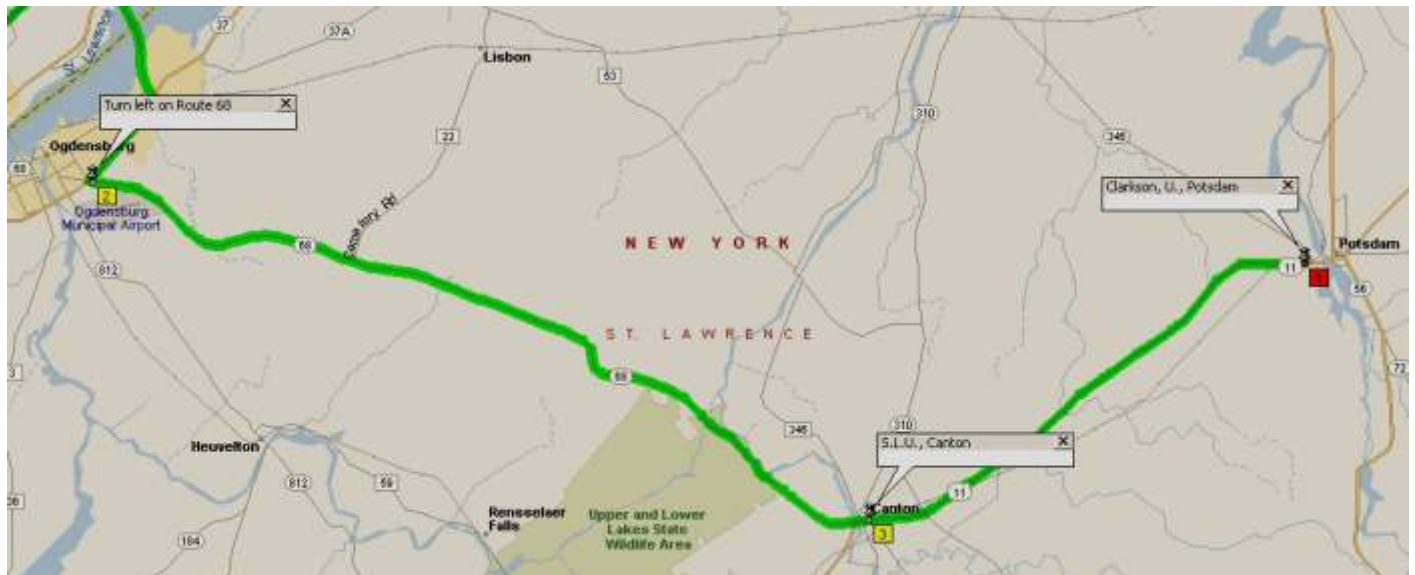
Processional 2:05 pm

Recessional ??? pm

What we have done in past years.... We have paraded from the back of the graduates, up through the graduates (a 10 minute march) and into the arena – Cheel Campus Center. We circle and play as the graduates and faculty enter the arena. When all the graduates and faculty are in, be prepared for a quick cut-off, followed by a quick strike-in, then we parade ourselves out of the building. At the end of the ceremony we lead the recessional out of the building.

The University normally provides us with complimentary Food and Beverages.

You may wish to bring a book to read....



From Brockville: Cross the International Bridge at Johnstown.

Reminder: take your passport. If asked by US Customs, we are NOT being paid.

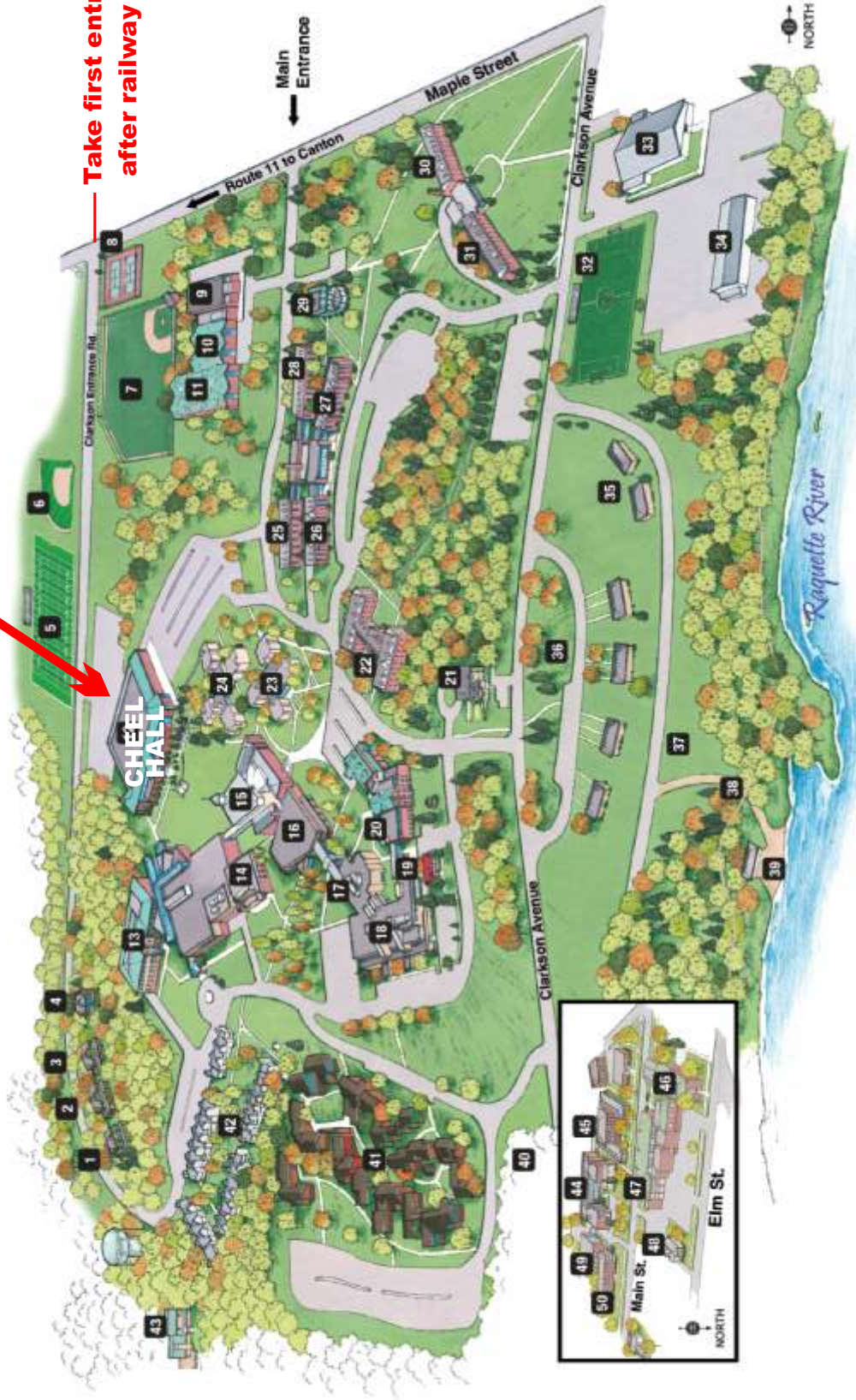
Turn right on Route 37, then left on Route 68 to Canton; continue straight through Canton on Route 11 to Potsdam. Enter the campus by the western (**first**) entrance; see the map on the next page.

Drivers need a Parking Permit — see third page; print a copy.

We are playing in the same building as usual. Proceed to the **Cheel Campus Center** - first building on the left and park in the parking lot beside the building.
Commencement takes place in the Cheel Campus Center.

PARK HERE

**Take first entrance
after railway overpass**





VIP
PARKING PERMIT
COMMENCEMENT 2019



Brockville
Pipes & Drums